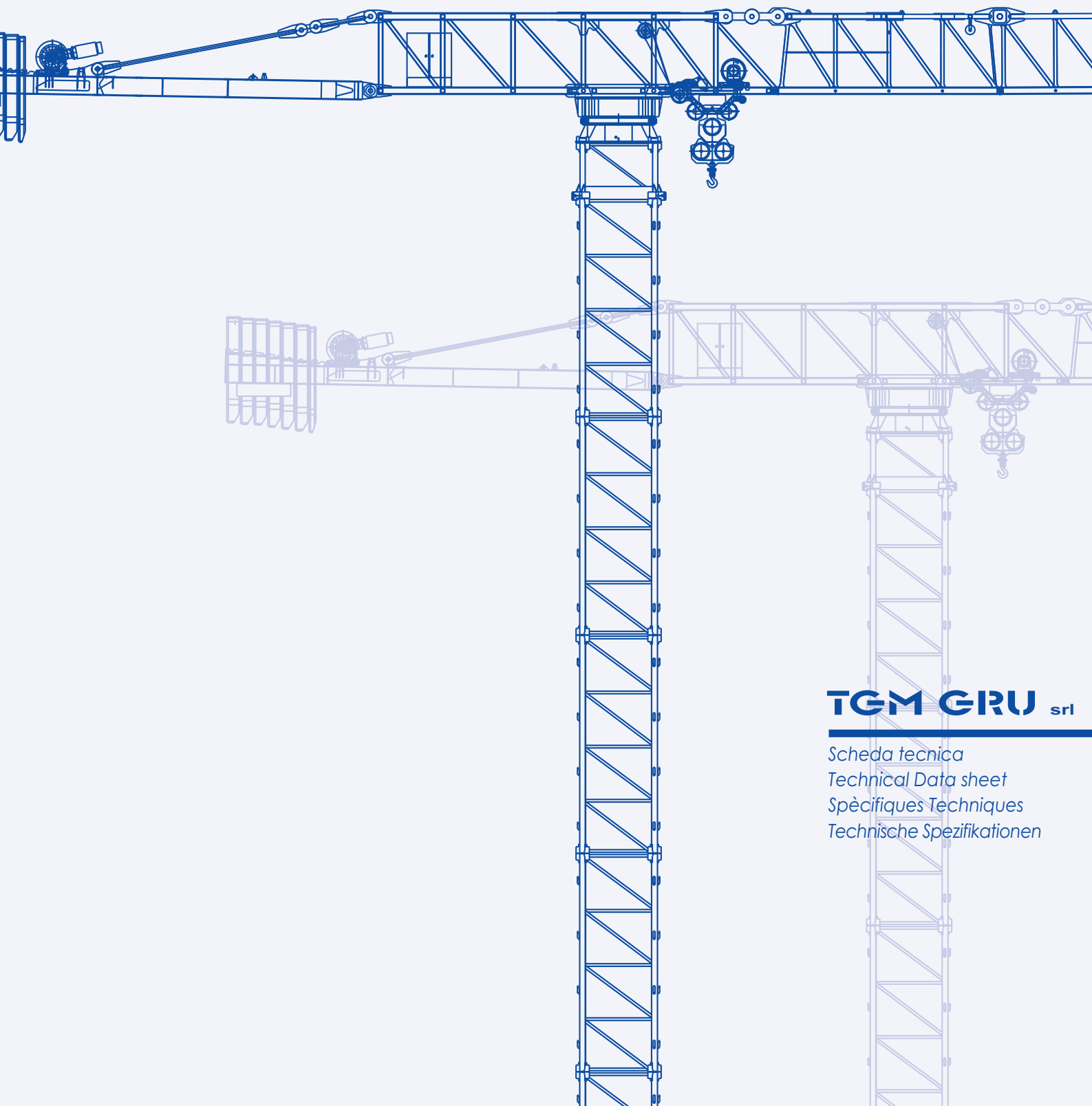




GRU A TORRE "TOPLESS"
"TOPLESS" CITY CRANE

GRT 75-27



TGM GRU srl

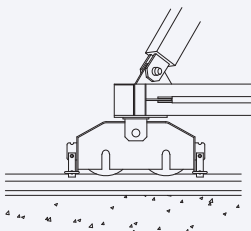
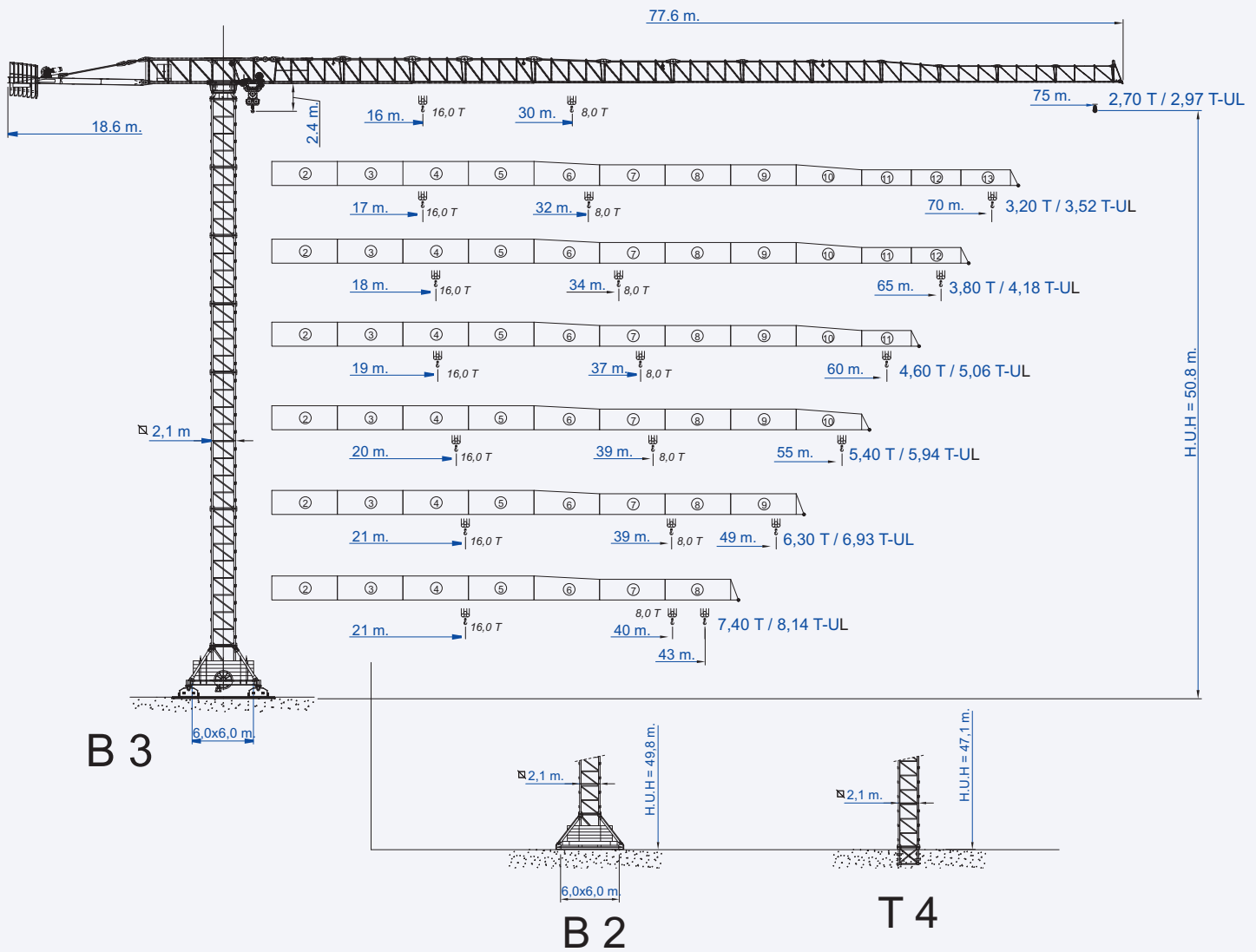
*Scheda tecnica
Technical Data sheet
Spécifiques Techniques
Technische Spezifikationen*

GRT 75-27

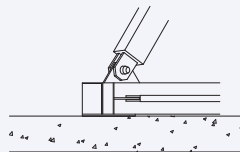
GRU A TORRE "TOPLESS"
"TOPLESS" CITY CRANE



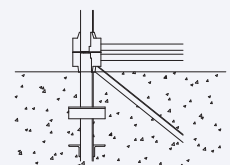
FEM 1,001 A3



B 3



B 2



T 4

Dati illustrativi non impegnativi
Con riserva di modifica
senza preavviso

Specifications and data
not binding
Subject to modification without notice

Angaben und Beschreibung
unverbindlich
Änderungen vorbehalten ohne weitere
Mitteilung

Données techniques seulement
indicatives
Modifications réservées sans préavis

CURVE DI CARICO

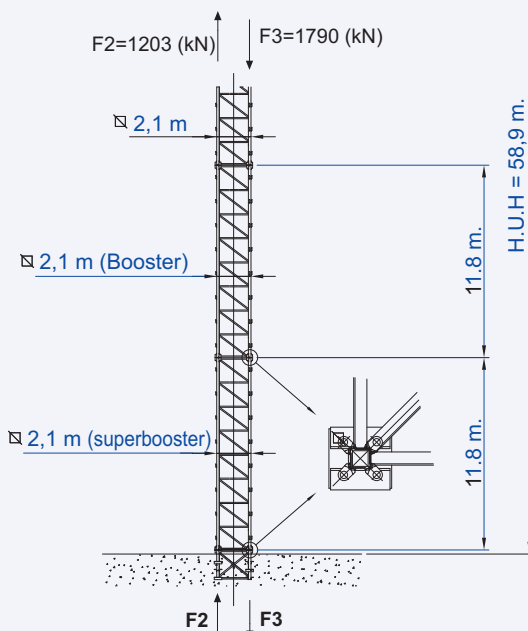
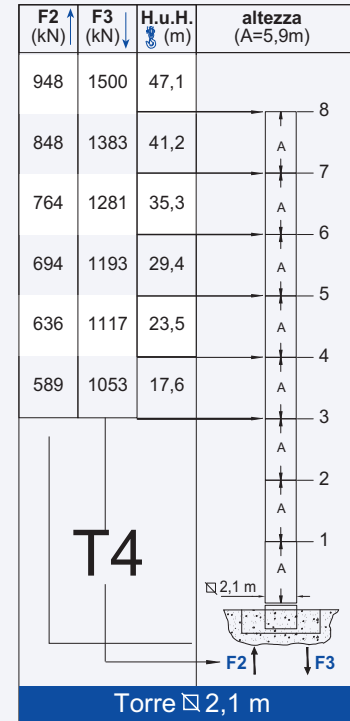
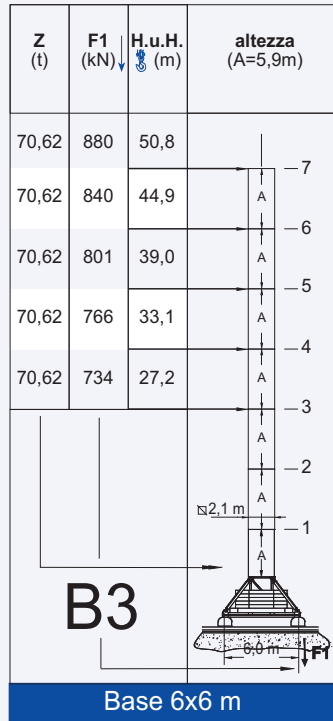
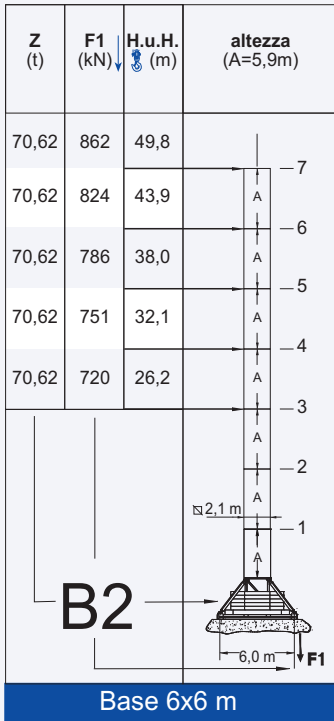
CARGO CURVES LOAD DIAGRAMS COURBES DE CHARGES

m.	Portata max - Max s.w.l. - Charge maxi																				8,0 t	m.																										
75	30	32	34	36	38	40	42	44	46	48	50	52	54	56	58	60	62	64	66	68	70	72	75	8,00	7,69	7,17	6,71	6,30	5,93	5,59	5,29	5,02	4,76	4,53	4,32	4,12	3,94	3,77	3,61	3,46	3,32	3,19	3,07	2,96	2,85	2,70	m.	t
70	30	32	34	36	38	40	42	44	46	48	50	52	54	56	58	60	62	64	66	68	70	8,00	8,00	7,67	7,18	6,74	6,35	6,00	5,67	5,38	5,11	4,87	4,64	4,43	4,24	4,06	3,89	3,73	3,59	3,45	3,32	3,20	m.	t				
65	30	32	34	36	38	40	42	44	46	48	50	52	54	56	58	60	62	64	65	8,00	8,00	8,00	7,69	7,23	6,81	6,43	6,09	5,78	5,50	5,23	4,99	4,77	4,56	4,37	4,19	4,03	3,87	3,80	m.	t								
60	30	32	34	36	37	38	40	42	44	46	48	50	52	54	56	58	60	8,00	8,00	8,00	8,00	7,87	7,42	7,01	6,64	6,31	6,00	5,72	5,46	5,22	5,00	4,79	4,60	m.	t													
55	30	32	34	36	37	39	40	42	44	46	48	50	52	54	55	8,00	8,00	8,00	8,00	8,00	7,82	7,39	7,01	6,66	6,33	6,04	5,77	5,51	5,40	m.	t																	
49	30	32	34	36	37	39	40	42	44	46	48	49	8,00	8,00	8,00	8,00	8,00	7,96	7,52	7,13	6,78	6,45	6,30	m.	t																							
43	30	32	34	36	38	40	42	43	8,00	8,00	8,00	8,00	8,00	8,00	7,60	7,40	m.	t																														

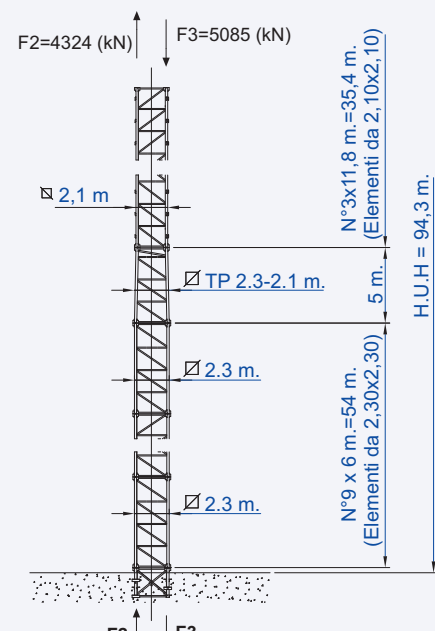
m.	Portata max - Max s.w.l. - Charge maxi																				8,0 t	16,0 t	m.																																							
75	16	18	20	22	24	26	28	30	32	34	36	38	40	42	44	46	48	50	52	54	56	58	60	62	64	66	68	70	72	75	16,0	14,4	12,8	11,4	10,3	9,45	8,66	7,98	7,39	6,87	6,41	6,00	5,63	5,29	4,99	4,72	4,46	4,23	4,02	3,82	3,64	3,47	3,31	3,16	3,02	2,89	2,77	2,66	2,55	2,40	m.	t
70	16	17	20	22	24	26	28	30	32	34	36	38	40	42	44	46	48	50	52	54	56	58	60	62	64	66	68	70	16,0	16,0	13,6	12,2	11,1	10,1	9,27	8,55	7,92	7,37	6,88	6,44	6,05	5,70	5,37	5,08	4,81	4,57	4,34	4,13	3,94	3,76	3,59	3,43	3,29	3,15	3,02	2,90	m.	t				
65	16	18	20	22	24	26	28	30	32	34	36	38	40	42	44	46	48	50	52	54	56	58	60	62	64	65	16,0	16,0	14,6	13,1	11,8	10,8	9,94	9,17	8,50	7,91	7,39	6,93	6,51	6,13	5,79	5,48	5,20	4,93	4,69	4,47	4,26	4,07	3,89	3,73	3,57	3,50	m.	t								
60	16	19	20	22	24	26	28	30	32	34	36	38	40	42	44	46	48	50	52	54	56	58	60	16,0	16,0	15,8	14,2	12,9	11,7	10,8	9,99	9,26	8,63	8,07	7,57	7,12	6,71	6,34	6,01	5,70	5,42	5,16	4,92	4,70	4,49	4,30	m.	t														
55	16	18	20	22	24	26	28	30	32	34	36	38	40	42	44	46	48	50	52	54	55	16,0	16,0	16,0	15,0	13,5	12,4	11,4	10,5	9,77	9,10	8,52	7,99	7,52	7,09	6,71	6,36	6,03	5,74	5,47	5,21	5,10	m.	t																		
49	16	18	21	22	24	26	28	30	32	34	36	38	40	42	44	46	48	49	16,0	16,0	16,0	15,2	13,8	12,6	11,6	10,7	9,94	9,27	8,67	8,14	7,66	7,22	6,83	6,48	6,15	6,0	m.	t																								
43	16	18	21	22	24	26	28	30	32	34	36	38	40	42	43	16,0	16,0	16,0	15,4	13,9	12,7	11,7	10,8	10,0	9,36	8,76	8,22	7,73	7,30	7,10	m.	t																														

TORRE/REAZIONI

MAT RÉACTIONS MASTE/ECKDRÜCKE MĀST/REACTIONS MASTIL/REAÇIONES TRAMO/REACCIOES






T4 Booster da 2,1x2,1 m.

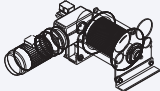




T4 da 2,3x2,3 m.

MECCANISMI

MECANISMES ANTRIEBE MECHANISMS MECANISMOS

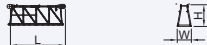
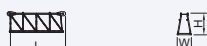

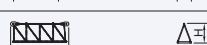

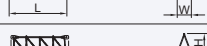

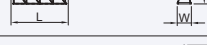

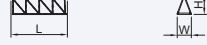
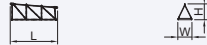
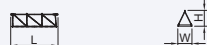
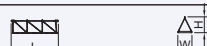
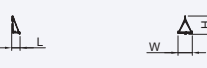
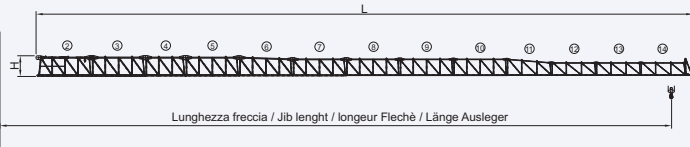




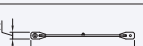
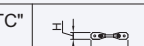


		Velocità / Speed Vitesse / Geschwindigkeit	Potenza / Power Puissance / Leistung
Rotazione Slewing Orientation Schwenken		0 - 0,74 r.p.m.	4 x 60 Nm
Carrello Trolley Chariot Katzfahren		12/38/80 m./min.	11 Kw. (15 HP)
traslazione traslation traslation übersetzung		18 m./min.	4x4 kw

Argano sollevamento Hoisting winch Treuil soulèvement Förderwinde 	Potenza-power puissance - Leistung		Fune - rope cable - seil	Marcia Step vitesse gang				
	PS - hp	kW	m		kg	m/min	kg	m/min
					kg	m/min	kg	m/min
55 FV5 80	75	55	320	1	8000	4	16000	2
				2	8000	32	16000	16
				3	6000	42	12000	21,5
				4	4200	55	8400	27,5
				5	3000	72	6000	36
67 FV5 80	92	67	470	1	8000	4	16000	2
				2	8000	40	16000	20
				3	6000	55	12000	27,5
				4	4200	72	8400	36
				5	3000	92	6000	46
75 FV5 80	102	75	470 780* (tipo Lebus)	1	8000	4	16000	2
				2	8000	41	16000	20,5
				3	6000	56	12000	28
				4	4000	81	8000	40,5
				5	3200	100	6400	50
				6	1600	110	3200	55

*Consultare Ufficio Tecnico TGM To consult TGM Technical Office Consulter TGM Bureau Technique Technisches Büro zu befragen

Potenza totale richiesta Total installed power Puissance totale necessaire Geforderte Stromstarke Potencia necesaria	55 FV5 80 - 110 kVA	400 V - 50 Hz
	67 FV5 80 - 125 kVA	
	75 FV5 80 - 135 kVA	

PESI ED INGOMBRI PACKING LIST LISTE DE COLLISAGE KOLLI-LISTE

Pos. Item	Pezzi Pieces	Denominazione Description	Schizzo Sketch	Dimensioni Dimensions			Peso Weight (Kg)		
				L	W	H	Unit.	Total.	
1	1	Elementi di freccia Jib element Elément de flèche Elemente von Arm	N°2 	6,515	1,600	2,340	3600	-	
	1		N°3 	6,530	1,600	2,340	2670	-	
	1		N°4 	5,030	1,600	2,300	1700	-	
	1		N°5 	6,510	1,600	2,300	1810	-	
	1		N°6 	6,480	1,600	2,265	1670	-	
	1		N°7 	6,455	1,600	2,045	1465	-	
	1		N°8 	6,415	1,600	2,005	1100	-	
	1		N°9 	6,355	1,600	1,965	900	-	
	1		N°10 	6,325	1,600	1,945	780	-	
	1		N°11 	5,325	1,600	1,935	510	-	
	1		N°12 	5,305	1,600	1,505	430	-	
	1		N°13 	5,295	1,600	1,495	340	-	
	1		N°14 	5,295	1,600	1,495	340	-	
	1		Puntale Jib point Elément de pointe		0,940	1,600	2,050	165	-
	Freccia Jib Flèche Ausleger	 Lunghezza freccia / Jib lenght / longueur Flèchè / Länge Ausleger			75 m.	73,60	1,600	2,340	-
70 m.					68,60	1,600	2,340	-	17140
65 m.					63,60	1,600	2,340	-	16800
60 m.					58,60	1,600	2,340	-	16370
55 m.					53,60	1,600	2,340	-	15860
49 m.					47,60	1,600	2,340	-	15080
43 m.					41,60	1,600	2,340	-	14180
2	1	Elemento controfreccia "T" porta argano carrello "T" Counterjib section with trolley winch Contreflèche porte treuil Gegenfock-Abschnitt mit Karren-Winde		11,200	1,600	2,346	7100	-	
3	1	Elemento controfreccia porta argano sollevamento Counterjib section with hoisting winch Contreflèche porte treuil Gegenauslegerteil mit Hubgewinde		12,000	3,500	1,800	7000	-	
4	2	Tiranti freccia / Tirants de flèche Jib connecting rods / Zugstangen arms	"BF" 	"BF"	1,110	0,170	0,400	151	302
	2		"BT" 	"BT"	1,110	0,110	0,400	150	300
	2	Tiranti controfreccia Counterjib connecting rods Tirants de contreflèche Gegenauslegerteil arms	"TC" 	"TC"	5,803	0,160	0,380	435	870
	2		"FC" 	"BC"	0,880	0,050	0,380	112	224
	1		"BC" 	"FC"	2,070	1,760	0,380	478	-
5	1	Gruppo rotazione Slewing table Table tournante Drehgruppe		2,350	2,600	2,000	7800	-	

Pos. Item	Pezzi Pieces	Denominazione Description	Schizzo Sketch	Dimensioni Dimensions			Peso Weight (Kg)		
				L	W	H	Unit.	Total.	
6	1	Carrello braccio Hoisting block / Poulie de soulèvement Ankerblock von Heben		1,700	1,850	1,100	780	-	
7	1	Bozzello sollevamento Hoisting block / Poulie de soulèvement Ankerblock von Heben		"T2"	1,275	0,330	1,155	380	
	"T4"			0,730	0,230	0,991	176	556	
8	1	Ballatoio cabina, cabina Access balcon y, cabin Porte cabine Wartung plattform		3,100	2,360	1,950	600	-	
9	-	Elemento di torre Tower element Elément de mature Turmstück	HC210 	11,800	2,300	2,300	6200	-	
	-			5,900	2,300	2,300	3250	-	
	-			2,950	2,300	2,300	1840	-	
10	1	Elemento di spinta Connection frame Climbing cage Turmbasiselement		1,500	2,400	2,400	1200	-	
11	1	Gabbia di montaggio Climbing cage Cage de montage Hydraulikbühne		7,900	5,500	4,150	7200	-	
12	1	Tronchetto di fondazione Expendable foundation element Elément a sceller Fundamentanker		1,810	2,400	2,400	1,400	-	
13	4	Puntoni di base Obliqual legs Jambes de force Basisdruckstäben		3,770	0,230	0,260	340	1360	
	1	Trave principale della crociera di base Base main beam Poutre de chassis de base Hauptträger für Kreuzgelenk		8,900	0,720	0,760	1650	-	
	2	Semitrave della crociera di base Half base beam Semipoutre de chassis de base Halbträger für Kreuzgelenk		4,350	0,600	0,760	750	1500	
	1	Elemento di base monolitico Base element Elément de base		3,000	2,300	2,300	2000	-	
	4	Puntoni interni Obliqual legs (inside) Jambes de force intérieures Basisdruckstäben internierst		1,700	0,100	0,100	45	180	
14	2	Bilancino di traslazione motorizzato Driven bogie Boggie motorisée Fahrschemel mit Motorantrieb		1,160	0,590	0,503	680	1360	
	2	Bilancino di traslazione folle Driven bogie Boggie fou Fahrschemel		1,160	0,250	0,503	455	960	
15	18	Blocco di zavorra Base ballast block Lest de base Grundballastblöcken		4,200	0,320	1,400	3230	58140	
	2			5,200	0,400	1,400	6240	12480	
16	1	Blocchi di contrappeso Counterweight block Contre-poids Gegengewichtsbloecke		(V 180)	1,800	0,200	2,400	1800	-
	2			(V 235)	1,800	0,200	3,290	2350	4700
	8			(V 352)	1,800	0,300	3,290	3520	28160

T.G.M. by Top Gru Machine S.r.l.

Sede legale: Via Baraggia 9, ang. SP.28 -22100- Albate (CO) Tel +39 031 594751 Fax +39 031 520815
Unità produttiva: Via Piccinelli,2 -22076- Mozzate (CO) Tel +39 0331 837266 Fax +39 0331 688063
c.f./p.iva/Reg. Impr. Como 03290830136 cap. soc. €100.000,00 i.v. REA CO n. 306478
www.tgmgru.com info@tgmgru.com

SOPRALZO IDRAULICO versione HC 210 - 45

EXTERNAL CLIMBING KLETTERRANE TELESCOPABLE

