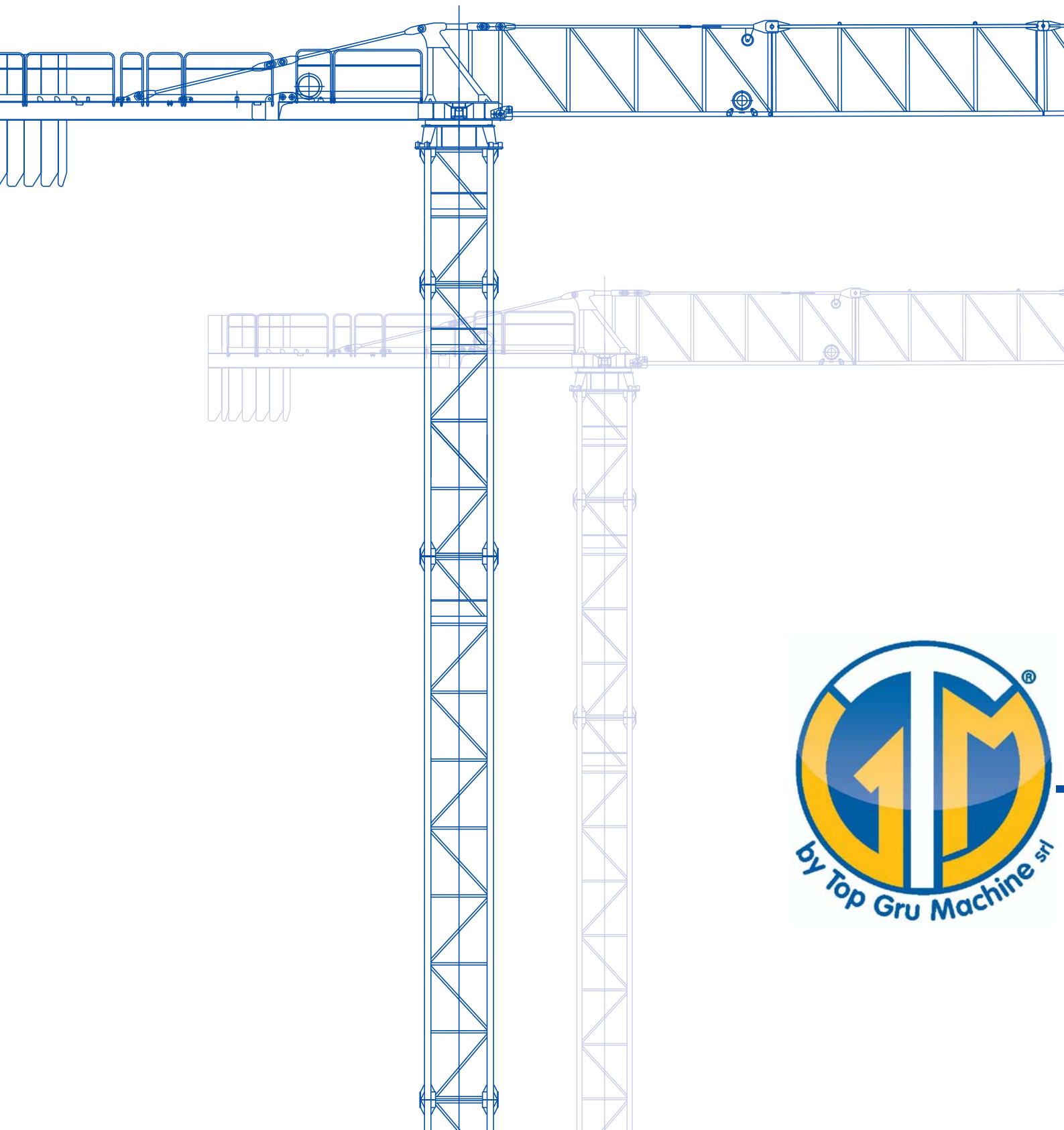
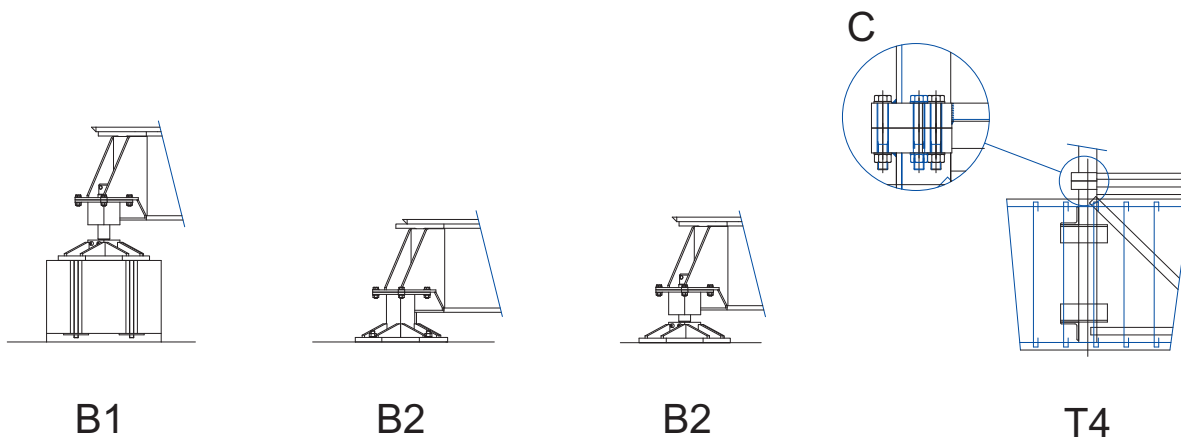
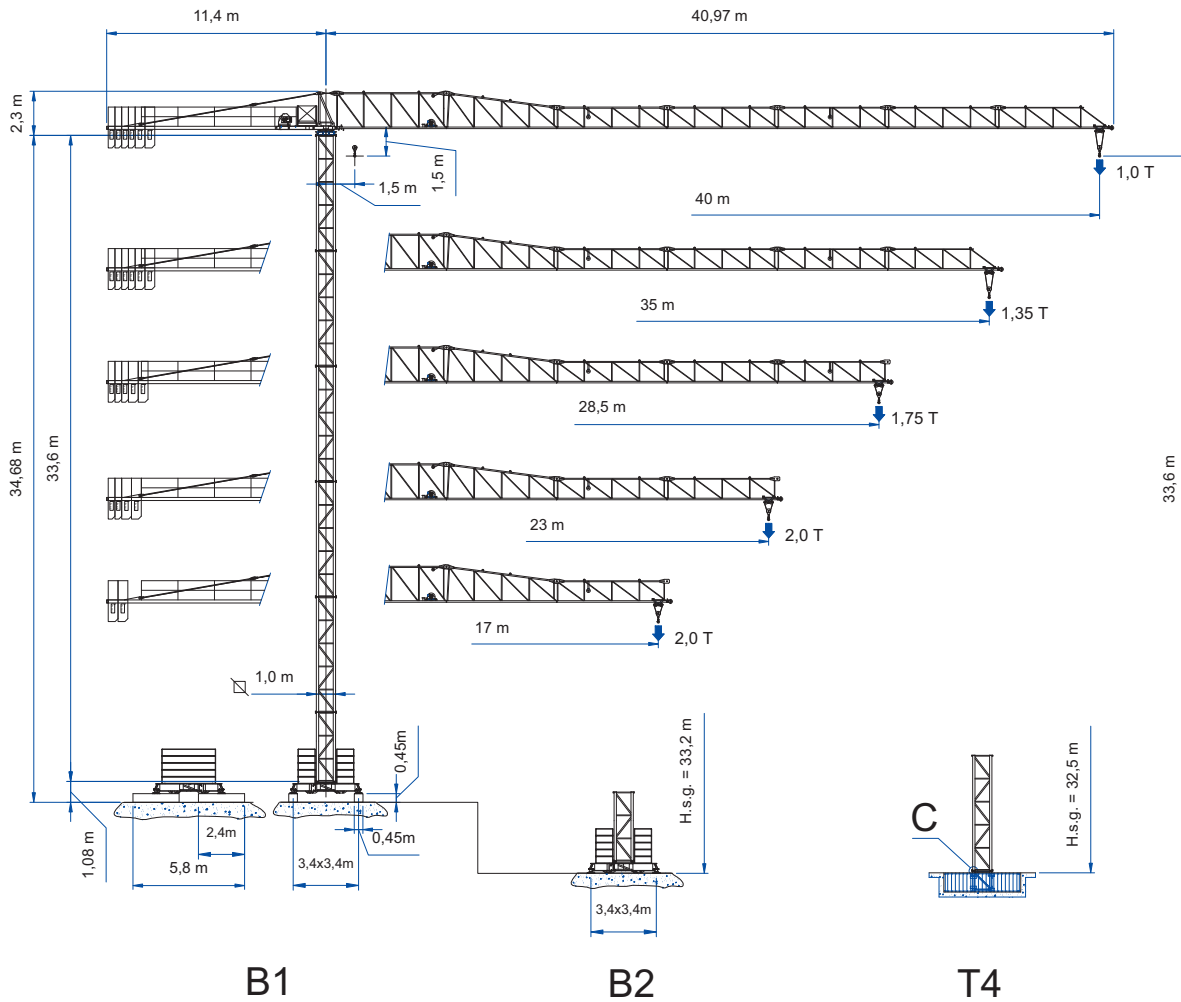




GRU A TORRE "TOPLESS"  
"TOPLESS" CITY CRANE

# GR40





Dati illustrativi non impegnativi  
Con riserva di modifica  
senza preavviso

Specifications and data  
not binding  
Subject to modification without notice

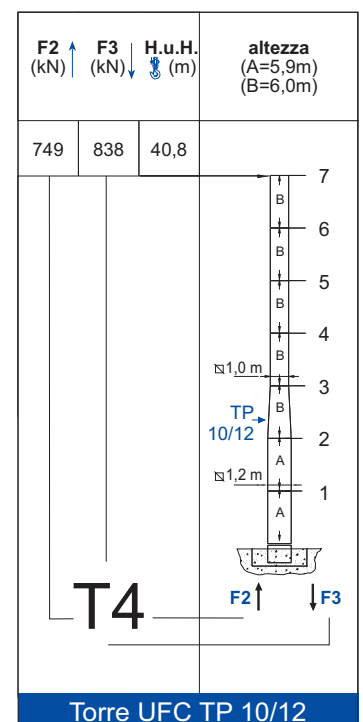
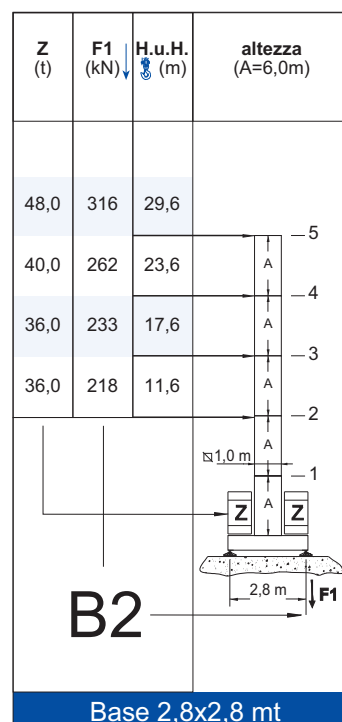
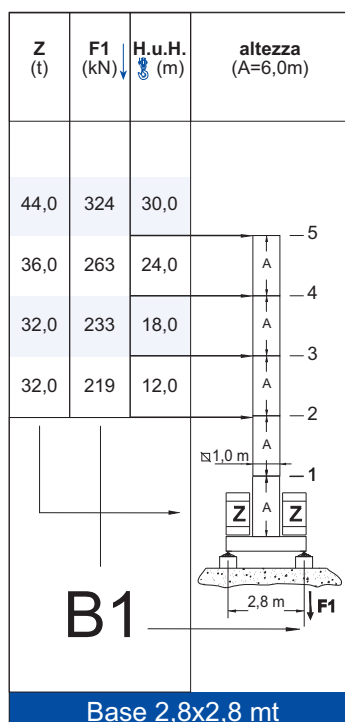
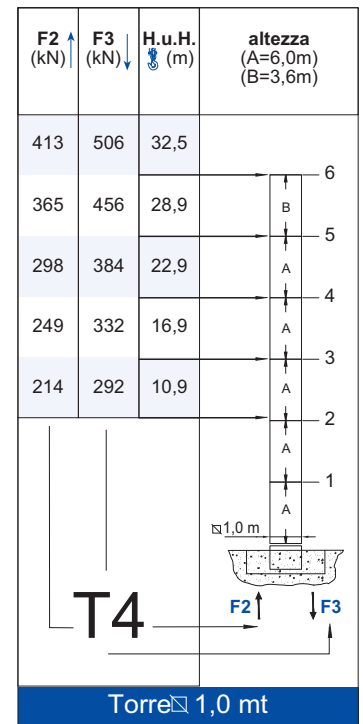
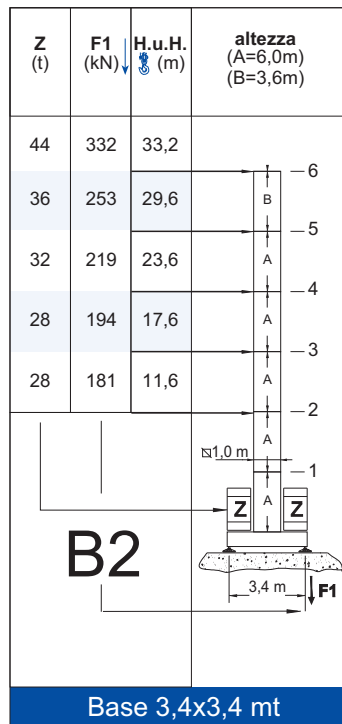
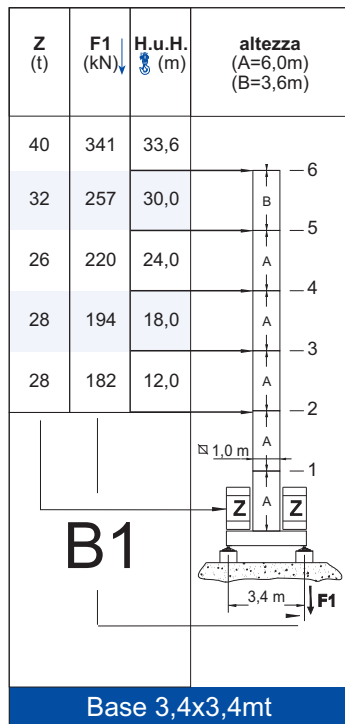
Angaben und Beschreibung  
unverbindlich  
Änderungen vorbehalten ohne weitere  
Mitteilung

Données techniques seulement  
indicatives  
Modifications réservées sans préavis




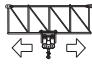

## TORRE/REAZIONI

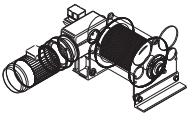


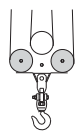
MAT RÉACTIONS MASTE/ECKDRÜCKE MAST/REACTIONS MÁSTIL/REACCIONES TRAMO/REACÇÕES



## MECCANISMI

MÈCANISMES ANTRIEBE MECHANISMS MECANISMOS

	giri/min	m/min	Nm	Kw
	1,02	-	35	-
	-	20/40	-	1,4
	-	-	-	-

				marcia - step vitesse - gang		
	CV - ch PS - hp	KW			m	m/min
8 3S 20	12	8,8	90	1	5,5	2
				2	22	2
				3	44	1
11 3S 30	15	11	155	1	4,5	3,0
				2	18	3,0
				3	36	1,5

Potenza totale richiesta Total installed power Puissance totale nécessaire Geforderte Stromstärke Potencia necesaria		400 V - 50 Hz
	8 3S 20 - 16kVA	
	11 3S 30 - 18kVA	

## PESI ED INGOMBRI

PACKING LIST LISTE DE COLISAGE KOLLI-LISTE

Pos. Item	Pezzi Pieces	Denominazione Description	Schizzo Sketch	Dimensioni Dimensions (m)			Peso Weight (Kg)		
				L	W	H	Unit	Total.	
1	1	Elemento di freccia Jib element Elément de flèche ausleger	N° 1	5,985	0,790	2,040	*	683	
	1		N° 2	5,985	0,790	1,930	*	410	
	1		N° 3	5,985	0,790	1,190	*	364	
	1		N° 4	5,985	0,790	1,190	*	321	
	1		N° 5	5,985	0,790	1,190	*	297	
	1		N° 6	5,985	0,790	1,190	*	263	
	1		N° 7	5,860	0,790	1,190	*	238	
2	Freccia Flèche Jib Ausleger		40 m 35m 28,5m 23m 17 m	40,6 34,8 29,1 23,4 17,6	0,790 0,790 0,790 0,790 0,790	2,040 2,040 2,040 2,040 2,040	*	2576 2338 2075 1778 1457	
3	1	Controfreccia girevole, argano di sollev., quadro elettrico Counterjib-turntable, hoisting winch, electrical box etc. Contreflèche tournante, treuil de levage, armoire électrique. Gegenausleger, Hubwinde, Drehwerk Schaltschrank.		3,75	1,705	2,3	*	1925	
4	1	Elemento controfreccia esterno External counterjib Contreflèche extérieure Externes gegenausleger		9,1	0,875	1,23	*	795	
5	4 2	Blocchi di contappeso Counterweight block Contre-poids Gegengewichtsblöcke		A 350 B 510	0,600 0,600	0,35 0,51	2,145 2,145	814 1192	3256 2384
6	1	Elemento di torre Tower element Elément de mature Turmstück		6,0	1,11	1,11	*	985	
				3,6	1,11	1,11	*	600	
				2,4	1,11	1,11	*	412	
1	1	Tronchetto di fondazione Expendable foundation element Elément a sceller - Fundamentanker		1,075	1,11	1,11	*	334	

\* (Unit = Total)

Pos Item	Pezzi Pieces	Denominazione Description	Schizzo Sketch	Dimensioni Dimensions (m)			Peso Weight (Kg)		
				L	W	H	Unit	Total.	
7	1	Trave di base principale Base main Beam Poutre de Chassis de base Hauptträger für kreuzgelenk		TP (2,8x2,8m)	4,16	2,4	0,605	*	1083
				TP (3,4x3,4m)	5,01	2,4	0,605	*	1154
	2	Semi-trave di base Half base beam Semipoutre de chassis de base Hauptträger für kreuzgelenk		TP (2,8x2,8m)	1,15	0,3	0,49	172	344
				TP (3,4x3,4m)	1,575	0,3	0,49	225	450
8	24	Blocco di zavorra Base ballast block (B28-09)		(2,8x2,8m)	2,800	0,900	0,360	2000	48000
	22	Lest de base Grundballastblöcken		(3,4x3,4m)	2,800	0,900	0,360	2000	44000
9	4	Blocco di appoggio Concrete pad Sabot en béton Betonfuss (BA2)		2,400	0,450	0,450	1000	4000	

\*(Unit = Total)

### Torre City $\square$ 1,2mt

Pos Item	Pezzi Pieces	Denominazione Description	Schizzo Sketch	Dimensioni Dimensions (m)			Peso Weight (Kg)	
				L	W	H	Unit	Total.
10	1	Elemento di torre TP 1,0/1,2m TP 1,0/1,2m Tower element TP 1,0/1,2m Élément de mature TP 1,0/1,2m Turmstück		6,0	1,2	1,38	*	1515
11	1	Elemento di torre Tower element Élément de mature Turmstück		5,9	1,2	1,38	*	1620
12	1	Tronchetto di fondazione Expendable foundation element élément a sceller Fundamentnker		1,090	1,38	1,38	*	455

\*(Unit = Total)

<p>B 3.4x3.4m Tot. 1604 Kg. B 2.8x2.8m Tot. 1427 Kg.</p> <p>795 Kg.</p>	<p>6.0 / 985 Kg. 3.6 / 600 Kg. 2.4 / 412 Kg.</p> <p>1925 Kg.</p>	<p>B 28-09 / 2000 Kg.</p> <p>2720 Kg.</p>
---	--	---

# T.G.M. by Top Gru Machine S.r.l.

Sede legale: Via Baraggia 9, ang. SP.28 -22100- Albate (CO) Tel +39 031 594751 Fax +39 031 520815

Unità produttiva: Via Piccinelli,2 -22076- Mozzate (CO) Tel +39 0331 837266 Fax +39 0331 688063

c.f./p.iva/Reg. Impr. Como 03290830136 cap. soc. €100.000,00 i.v. REA CO n. 306478 [www.tgmgru.com](http://www.tgmgru.com) [info@tgmgru.com](mailto:info@tgmgru.com)

## SOPRALZO IDRAULICO versione HC - 100

EXTERNAL CLIMBING KLETTERKRANE TELESCOPABLE

